

## SPECIFICATIONS OF TIPPER SEMI-TRAILER (Made of ST-52) – 45 CBM

### General Specifications

Volume	: 45 m3 (CBM)
Dimensions	: 9.700 mm X 2450 mm X 2.400 mm
Chassis	: Made of ST 52-3 A Quality Steel
Axles	: 3 Units OSMAN KOC brand drum brake axles
King-pin	: 2" According to E71/220
Brake System	: 2S2M Wabco Brake System with EBS
Landing Legs	: 70 T static load capacity
Tyres	: 1200 R 22.5 Tyres & Rims (Bridgestone)
	12+1 units

### Tipper Body

Made of ST-52 steel

Floor : 6 mm

Sides : 5 mm

### Tipping System

Hydraulic 5 Level tipping cylinder (will be arranged according to wheelbase of trailer)

70 T capacity

Hydraulic Pump – 87 Ltr/Min at 1000 RPM – by PTO

Lower Ventile – 2 Level

Oil Tank – Made of ST37 steel with filter and unloading valve

1" R2 hydraulic hoses (850 Bar)

Electro-Pneumatic control unit

### Electrical System

24 V – 7 & 15 Plug electrical system with ADR certificate

Connectors 15 and 7 pin – 2 unit stop lamp by 7 functionally

2 units import plate illumination lamp

Reflectors and velocity plates (European type)

All cables will be hold by cable-holder

### Accessories

Mudguards

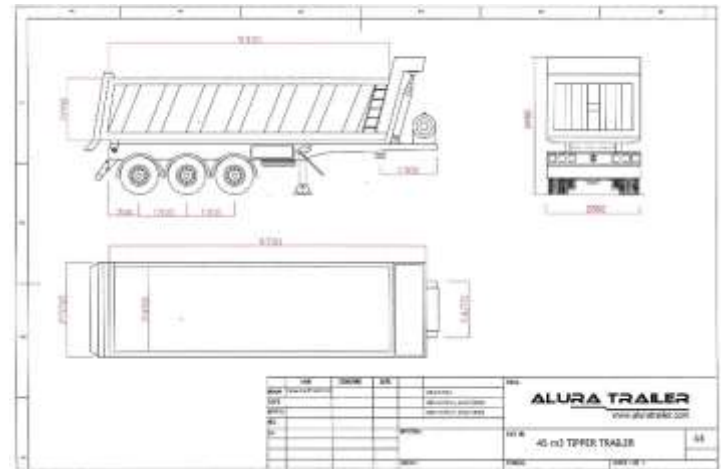
Side Protection

Hooks

2 sides swinging doors

### Paint

According to customer requirement with required RAL code and colours



**Thank you for your business!**